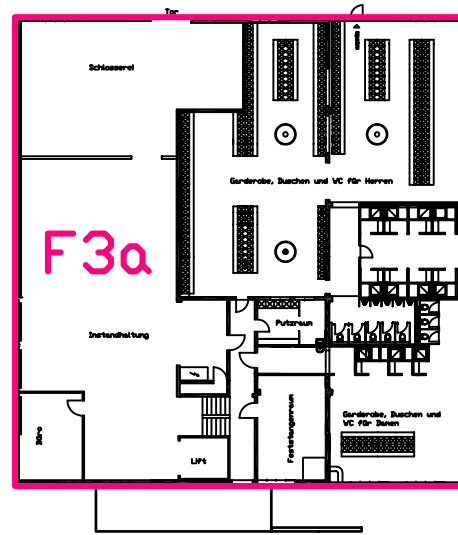
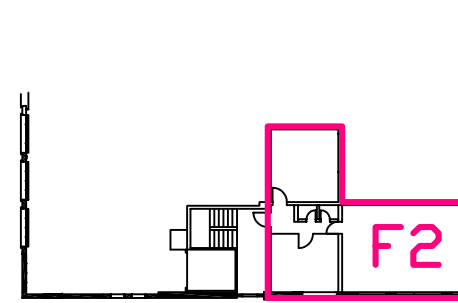


Dachgeschoss, OG 4

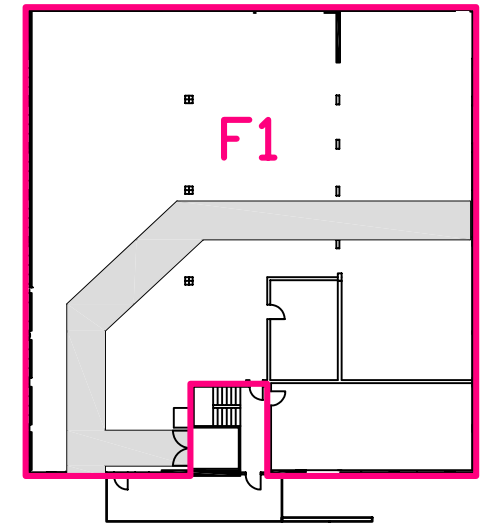


F3b Tor 7 siehe Zeichnung "West"

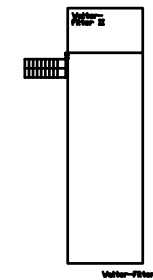
Umkleide/Instandh., OG 3



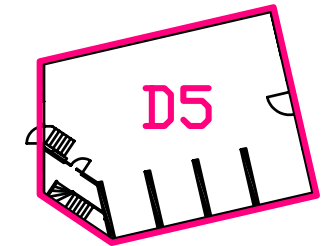
Büro, OG 2



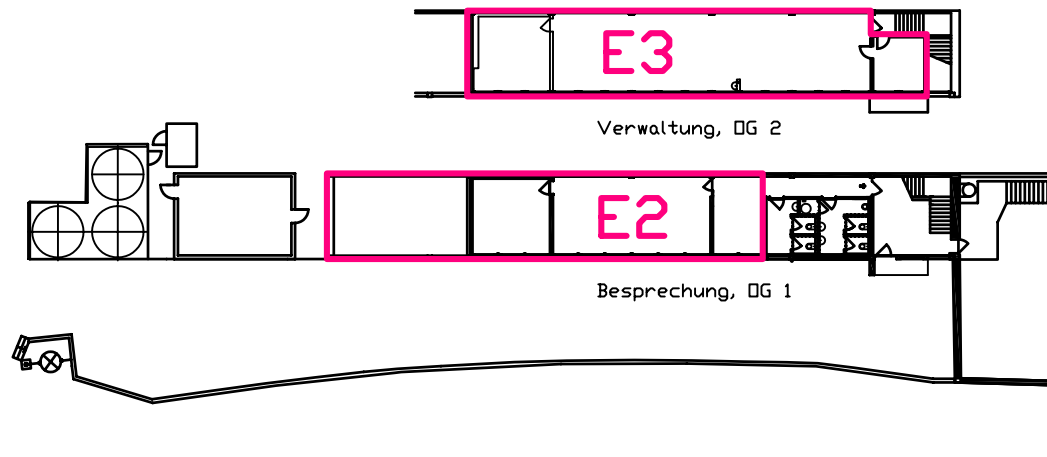
Modellschreinerei, OG 1



Filterplattform oberhalb Produktionsebene

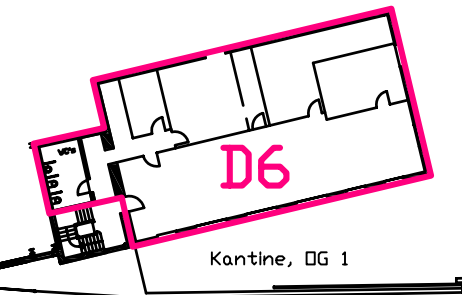


Labor, OG 1



Verwaltung, OG 2

Besprechung, OG 1



Kantine, OG 1

| | | | | | | |
|--------------------------|-------------|--------------|---|----------------------------|---------------|-------|
| Erstellt: | Kurt Feller | 8. Mai 2015 | Dateiname: | AMG G 2015 Index 15-04.dwg | Mstb.: | 1:500 |
| Ausgabe: | Index 15-04 | 9. Juni 2015 | | | | |
| AMG - Alu Metall Guss AG | | | Bruttogeschossflächen OG's - OG1 bis OG4 | | | |
| | | | A3 Index 15-04 Flaechen OGs Tor 4 u 7.pdf | Liste: 15-001 | Blatt: A3-1/1 | |